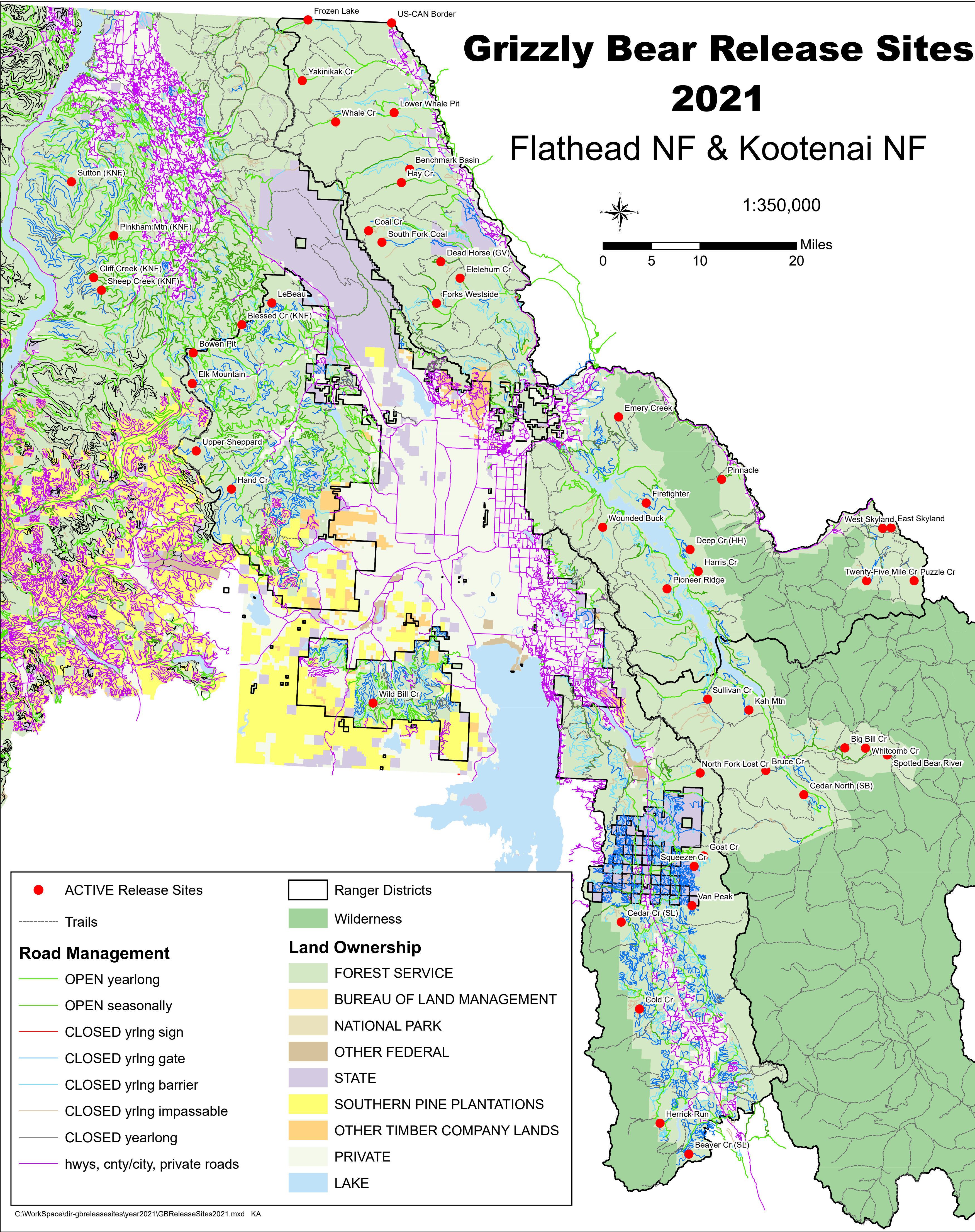


Grizzly Bear Release Sites

2021

Flathead NF & Kootenai NF



Description of Each Active Individual Release Site

Location Name	Town, Range, Section	Agency	Concerns and Constraints	Access Description
Beaver Cr (SL)	T.18N R.17W Sec.12	FNF SLRD	Active timber sale expected to operate June thru December 2021. Within 0.75 miles of trailheads on RD# 906	From MT Hwy 83 (Swan Hwy), up open RD# 906 approx 7.5 miles, continuing on as gated RD# 9570 another approx 5.1 miles to junc RD# 9570 and RD# 9656.
Benchmark Basin	T.35N R.22W Sec.22	FNF GVRD		From North Fork road, up open RD# 376, continue on gated RD# 1685, continue on gated RD# 1681 approx 4.75 miles
Big Bill Cr	T.25N R.14W Sec.10	FNF SBRD	Use before July. RD #568 open 5/15-11/30; RD# 9856 open 6/1-8/31 (Labor Day)	From RD# 38 (east side HH Reservoir), continue on seasonally open RD# 568, continue on seasonally open RD# 9856 past yearlong gate at mp 1.7 to turnaround where brushed in.
Blessed Cr (KNF)	T.32N R.25W Sec.15	KNF Fortine	On KNF but close to FNF. Coordinate with both KNF & FNF.	From US Hwy 93 North, up open RD# 315, continue on open RD# 3710, continue on seasonally open RD# 3711 to junc RD# 3711 & RD# 3739.
Bowen Pit	T.32N R.26W Sec.PB59	FNF TLRD	On open road. Sometimes used a campsite for volunteer or research crews. It's a gravel pit. Coordinate with both KNF and Trailhead at end of road; road serves as trail	On west edge of TLRD, from FS RD# 60 (open road), continue on RD# 5343 (open road) to end of road.
Bruce Cr	T.25N R.16W Sec.24	FNF SBRD		From RD# 895 (west side HH Reservoir), continue on open RD# 2826, continue on gated RD# 2827 approx 2.7 miles to end of driveable road.
Cedar Cr (SL)	T.22N R.18W Sec.11	FNF SLRD		From MT Hwy 83 (Swan Hwy), either open or seasonally open RD# 10182 to seasonally open RD# 10381 -OR- open RD# 966 to seasonally open RD# 10381. From RD# 10381, continue on gated RD# 90619, continue on gated RD# 91147 to end of road.
Cedar North (SB)	T.24N R.15W Sec.PB38	FNF SBRD	Road is above Meadow Creek road. Release site is about 1/4 to 1/2 mile from Meadow Creek	From RD# 895 (west side HH Reservoir), continue on open RD# 2826, continue on open RD# 2829, continue on gated RD# 9531 to junc RD# 9531 and RD# 9534
Cliff Creek (KNF)	T.33N R.27W Sec.29	KNF Fortine	Use only Jul 1 - Nov 30, when road is closed. Road open to public Dec 1 - Jun 30.	From Trego, take State Hwy 36 to 48, then RD# 494 to RD# 3553. Off open RD# 3553, take gated RD# 3560 (Cliff Ck) to upper switchbacks. There are several potential sites off this road.
Coal Cr	T.34N R.23W Sec.PB42	FNF GVRD	Trailhead, road opens 7/1.	From North Fork road, up open RD# 316, continue on open RD# 317, continue on seasonally open RD# 1684, past gate to end of driveable road
Cold Cr	T.21N R.17W Sec.30	FNF SLRD		From MT Hwy 83 (Swan Hwy), up open RD# 903 past road's yearlong gate at mp 5.3, continue on gated RD# 9589, continue on gated RD# 90502 to junc RD# 90502 and RD# 90503
Dead Horse (GV)	T.33N R.21W Sec. PB41	FNF GVRD	Road open 9/1-11/30. Recreation crews camping at trailheads & working on TR# 194, 255, 452 for 1-2 mons during summer. Exact timing is not yet known but spring & fall releases OK.	From North Fork Road, up open RD# 316 for 1 mi, then open RD# 317 for 9 miles, then RD# 1693 for 5 mi thru seasonally open gate to end of road where culvert was pulled
Deep Cr (HH)	T.29N R.17W Sec.PB48	FNF HHRD	Use only before July. Many resources will be in this area for field surveys for Dry Riverside Project	From RD# 38 (east side HH Reservoir), continue on gated RD# 1624, continue left past junction with RD# 1626 to end of RD# 1624
East Skyland	T.29N R.13W Sec.16	FNF HHRD	End of road is trailhead; trails in area.	From Hwy 2, up seasonally open RD# 569, continue on seasonal open RD# 1653 past yearlong gate at mp 2.5, continue on RD# 1653A to end of road.
Elelehum Cr	T.33N R.21W Sec.15	FNF GVRD	Road open 7/1-8/31; use outside open date. Recreation crews camping at trailhds & working on TR# 194, 255, 452 for 1-2 mons during summer. Exact timing is not yet known but spring & fall releases OK	From North Fork Road, up open RD# 316, continue up seasonally open RD# 5272 to barrier at mp 3.6
Elk Mountain	T.31N R.26W Sec.14	FNF TLRD	Coordinate with both FNF and KNF.	From US Hwy 93 North, access either via Farm to Market to Star Mdw (RD# 113) to RD# 2890 to RD# 2883 -OR- via Good Ck (RD# 60) to RD# 2883. From RD# 2883 (open yearlong), continue on gated RD# 9528 to junc RD# 9581 and RD# 9528.
Emery Creek	T.31N R.18W Sec.20	FNF HHRD	Dot NOT use after July 1 in 2021 as crews working nearby. Be aware of weed spraying & tree planting during spring. Gormed oversnow route nearby is open until 3/31.	From RD# 38 (east side HH Reservoir), continue up open road RD# 546, about 1.5 mi past gate (mp 4.8) to berm at junc. with RD# 1614.
Firefighter	T.29N R.18W Sec.02	FNF HHRD		From junction RD# 38 (east side HH Reservoir) & RD# 38B, continue on gated RD# 896 approx. 4.1 miles to junc RD# 896 & RD# 896E
Forks Westside	T.33N R.21W Sec.PB47	FNF GVRD	Trails in area	From North Fork Road, up open RD# 316, continue on open RD# 315, continue on open RD# 5207, continue on gated RD# 5220 to barrier at mp 2.51. A large "J" hole turn around at that location.
Frozen Lake	T.37N R.24W Sec.PB37	FNF GVRD	Access from open roads on Kootenai NF. Inform Border Patrol before releasing at this site.	Access from KNF; up RD# 114 (Grave Creek), continue up open RD# 319, continue on open RD# 114A, continue on open short spur RD# 10859 to end of road
Goat Cr	T.23N R.16W Sec.PB37	FNF SLRD		From MT Hwy 83 (Swan Hwy), up open RD# 554, continue on open RD# 9530 approx 2.8 miles to physical barrier
Hand Cr	T.29N R.25W Sec.09	FNF TLRD	Coordinate with both FNF and KNF.	From Hwy 2 West, up open RD# 538 (Griffin Ck), continue on gated RD# 2814 to junc RD# 2813 and RD# 2814. May also access from RD# 538 to RD# 538B, and continue on gated RD# 2813 to junc RD# 2814 and RD# 2813.
Harris Cr	T.28N R.17W Sec.10	FNF HHRD	Use only before July. Many resources will be in this area for field surveys for Dry Riverside Project.	From RD# 38 (east side HH Reservoir), continue on gated RD# 1631 approx 0.99 miles to end of driveable road.
Hay Cr	T.35N R.22W Sec.28	FNF GVRD	ONLY use in early season; road opens 7/1 - 11/30	From North Fork road, up open RD# 376, continue past gate on seasonally open road to junc RD# 376 & RD# 5221
Herrick Run	T.19W R.17W Sec.28	FNF SLRD	Trailheads approx 1 mi NW and 1.5 mi SSE	From MT Hwy 83 (Swan Hwy), up open RD# 79 approx 8.1 miles, continue on gated RD# 9575 to junc RD# 9575 and RD# 9574.
Kah Mtn	T.26N R.16W Sec.22	FNF SBRD	Not available during hunting season	From RD# 895 (west side HH Reservoir), continue on open RD# 2831 past road's yearlong gate at mp 4.1, continue on gated RD# 2831B to junc RD# 2831Y and RD# 2831B
LeBeau	T.33N R.24W Sec.32	FNF TLRD	Coordinate with KNF	From US Hwy 93 North, up open RD# 60 (Good Ck), continue on open RD# 910 (Martin Ck) approx 5.2 miles, continue on gated RD# 1649, continue on gated RD# 2815 to junc RD# 5336 and RD# 2815.
Lower Whale Pit	T.36N R.22W Sec.20	FNF GVRD	In 2021, only use before Jun 15 due to project work. Consider adding this as regular site for 2022 & beyond. If snow blocks road, use first gated road off RD# 318.	From North Fork road, up open RD# 318 (Whale Cr) to RD# 318P (Wahle Creek Pit), go into gravel pit area.
North Fork Lost Cr	T.25N R.17W Sec.26	FNF SLRD		From MT Hwy 83 (Swan Hwy), up open RD# 680, continue on open RD# 5260 to junc RD# 5206 and RD# 5206 south to RD# 433.
Pinkham Mtn (KNF)	T.34N R.27W Sec.34	KNF Fortine	Use only Jul 1 - Nov 30, when road is closed. Road open to public Dec 1 - Jun 30.	Can access from Eureka or Trego: From west, take RD# 1900 to RD# 433, From Trego take State Hwy 36 south to RD# 433. Off open RD# 433 (Edna Creek), take RD# 14230 to junction of RD# 14230/14231
Pinnacle	T.30N R.16W Sec.30	FNF HHRD	RD# 1638 is open yearlong; RD# 1637 is 7/1-10/15. Use when RD# 1637 is closed. Culvert wash-out is fixed. Snow concerns; check with nearby landowner	From Hwy 2, follow county roads to RD# 1638 (Paola Ck), continue on open RD# 1638, continue on seasonally open RD# 1637 approx 3.5 miles to end of road.
Pioneer Ridge	T.28N R.17W Sec.19	FNF HHRD	Slump is developing on RD# 895. Campgrounds nearby. Possible use in spring	From RD# 895 (west side HH Reservoir), continue on gated RD# 895D to barrier approx 4.25 miles in, vic. junc RD# 895D & RD# 9796
Puzzle Cr	T.28N R.13W Sec.11	FNF HHRD	Groomed snowmobile route; trails. Crews working nearby in early July & Sept, usually don't park there. Consider 25-mile or Skyland	From Hwy 2, up seasonally open RD# 569, continue past yearlong gate at mp 9.5 to end of driveable road, approx. mp 13.68
Sheep Creek (KNF)	T.33N R.27W Sec.33	KNF Fortine	Use only Jul 1 - Nov 30, when road is closed. Road open to public Dec 1 - Jun 30.	From Trego, take State Hwy 36 to 48, then RD# 494 to RD# 3553. Off open RD# 3553, take open RD# 3550 to RD# 3714 to gate. Go past gate to either junc w/ RD# 3715 or RD# 3714A
South Fork Coal	T.34N R.22W Sec.PB42	FNF GVRD		From North Fork road, up open RD# 316, continue on open RD# 317, past yearlong gate on RD# 317 at mp 12.44, continue on RD# 1686 to junc RD# 1686 & 1604
Spotted Bear River	T.25N R.13W Sec.8	FNF SBRD	ONLY use in early May; RD# 568 open 5/15-11/30	From RD# 38 (east side HH Reservoir), continue on seasonally open RD# 568 to end of road or as near as possible to end of road
Squeezer Cr	T.23N R.17W Sec.12	FNF SLRD	Access thru DNRC gates and roads. Check with DNRC first	From MT Hwy 83 (Swan Hwy), up open RD# 554, continue on open RD# 9578, continue on gated RD# 70146 to other gated roads to half mile past junc RD# 91498 & 91511
Sullivan Cr	T.26N R.17W Sec.14	FNF SBRD	Possibly OK anywhere on RD# 547 past 2.69 mp; RD# 547 impassable due to large slump approximately mp 3.5	From RD# 895 (west side HH Reservoir), continue on gated RD# 547, continue on gated RD# 975 to barrier by Sullivan Creek
Sutton (KNF)	T.34N R.28W Sec.2	KNF Rexford	Has a non-standard FS lock/key. May be contractors lock - should be regular lock once contractor removes - timber sale closed 2020.	Off east-side Lake Koocanusa road (State Hwy 37), take open RD# 619 east to gated portion of RD# 619. Turn-around at switchback, just behind gate at beg. of RD# 14093
Twenty-Five Mile Cr	T.28N R.14W Sec.13	FNF HHRD	May be possible to drive further along road	From Hwy 2, up seasonal open RD# 569, continue on gated RD# 1651 as far as it is possible to drive over divide into Twenty-five Mile Creek
Upper Sheppard	T.30N R.26W Sec.23	FNF TLRD	Coordinate with both FNF and KNF.	From either US Hwy 2 West to RD# 538 to RD# 538B to gated RD# 2885 -OR- from US Hwy 93 North to Farm to Market road to RD# 539 (Star Mdw) to RD# 538B. Then to gated RD# 2885. Continue RD# 2885 approx 2.6 miles to junc RD# 2885 & RD# 2973 (decomm.)
US-CAN Border	T.37N R.22W Sec.5	FNF GVRD	ONLY use in early spring. Inform Border patrol before releasing at this site.	Up North Fork RD (FLTHD CNTY RD# 486) to US-Canada border
Van Peak	T.22N R.17W Sec.01	FNF SLRD	Access thru DNRC gates. Check with DNRC first	From MT Hwy 35 (Swan Hwy), up open RD# 9578, continue on gated RD# 70136, which continues as RD# 90686, continue on gated RD# 91395 approx 1.7 miles to second major switchback.
West Skyland	T.29N R.13W Sec.17	FNF HHRD		From Hwy 2, up seasonally open RD# 569, continue on seasonal open RD# 1653 past yearlong gate at mp 2.5, continue on RD# 1653A to junc RD# 1653A & RD# 1653Y
Whale Cr	T.36N R.23W Sec.29	FNF GVRD	Site reactivated in 2021. Ninko Cabin rental approx 0.7 miles to north, but is used by public in winter only.	From North Fork road, up open RD# 318 about 11.4 miles (past junction with RD# 1674), continue on open RD# 10834 for 0.1 to 0.2 miles to barrier at Shorty Creek
Whitcomb Cr	T.25N R.14W Sec.12	FNF SBRD	In fall, road is pmary trail for early rifle season users in wilderness. RD# 568 open 5/15-11/30. No driveable road off RD# 568	From RD# 38 (east side HH Reservoir), continue on seasonally open RD# 568 to junc of RD# 568 and RD# 564
Wild Bill Cr	T.26N R.22W Sec.29	FNF SLRD		From Hwy 2 West to Truman Creek (RD# 916), continue on open RD# 213 (Wild Bill Ck) approx 8.1 miles, continue on gated RD# 2997 to junc RD# 2997 and RD# 2997B.
Wounded Buck	T.29N R.18W Sec.19	FNF HHRD	Avoid Memorial Day through Labor Day due to recreation nearby. Road open 7/1-11/30; trailhead approx 0.8 mi SSW	From RD# 895 (west side HH Reservoir), continue on seasonally open RD# 895C, continue on seasonally open RD# 5339 approx 0.1 miles to physical barrier at Wounded Buck Creek
Yakinikak Cr	T.36N R.24W Sec.3	FNF GVRD	Access on open roads from both FNF and KNF side. Coordinate with KNF.	From North Fork road, up open RD# 114, continue on open short spur RD# 10856 to end of road. From KNF, up open RD# 114 (Grave Creek), continue on RD# 114A over Whitefish Divide, continue on open short spur RD# 10656 to end of road